



Interiors
that
effect
your style



OXTO INTERNATIONAL

503 - Eden Ceramic City, 8-A National Highway,
Morbi-363642, Gujarat-INDIA

Call : +91 94089 61241 | +91 82381 21212

E-Mail : info@oxtrointernational.com

30X60cm

Vitrified Body
Wall Tiles



GVT Series

R9 Surface

R11 Surface

Sugar Surface



GVT (MATT)

30x60cm



9011-LT



9011-DK



GVT (MATT)

30x60cm



9027-LT



9027-DK



GVT (MATT)

30x60cm



9031-LT



9031-DK



GVT (MATT)

30x60cm



9038-LT



9038-WAVE-HL-A



9038-WAVE-HL-B



9038-DK



GVT (MATT)

30x60cm



9041-LT



9041-WAVE-HL-A



9041-WAVE-HL-B



9041-DK



GVT (MATT)

30x60cm



9042-LT



9042-DK



GVT (MATT)

30x60cm



9043-LT



9044-DK



GVT (MATT)

30x60cm



9046-LT



9046-DK



GVT (MATT)

30x60cm



9047-LT



9047-DK



GVT (MATT)

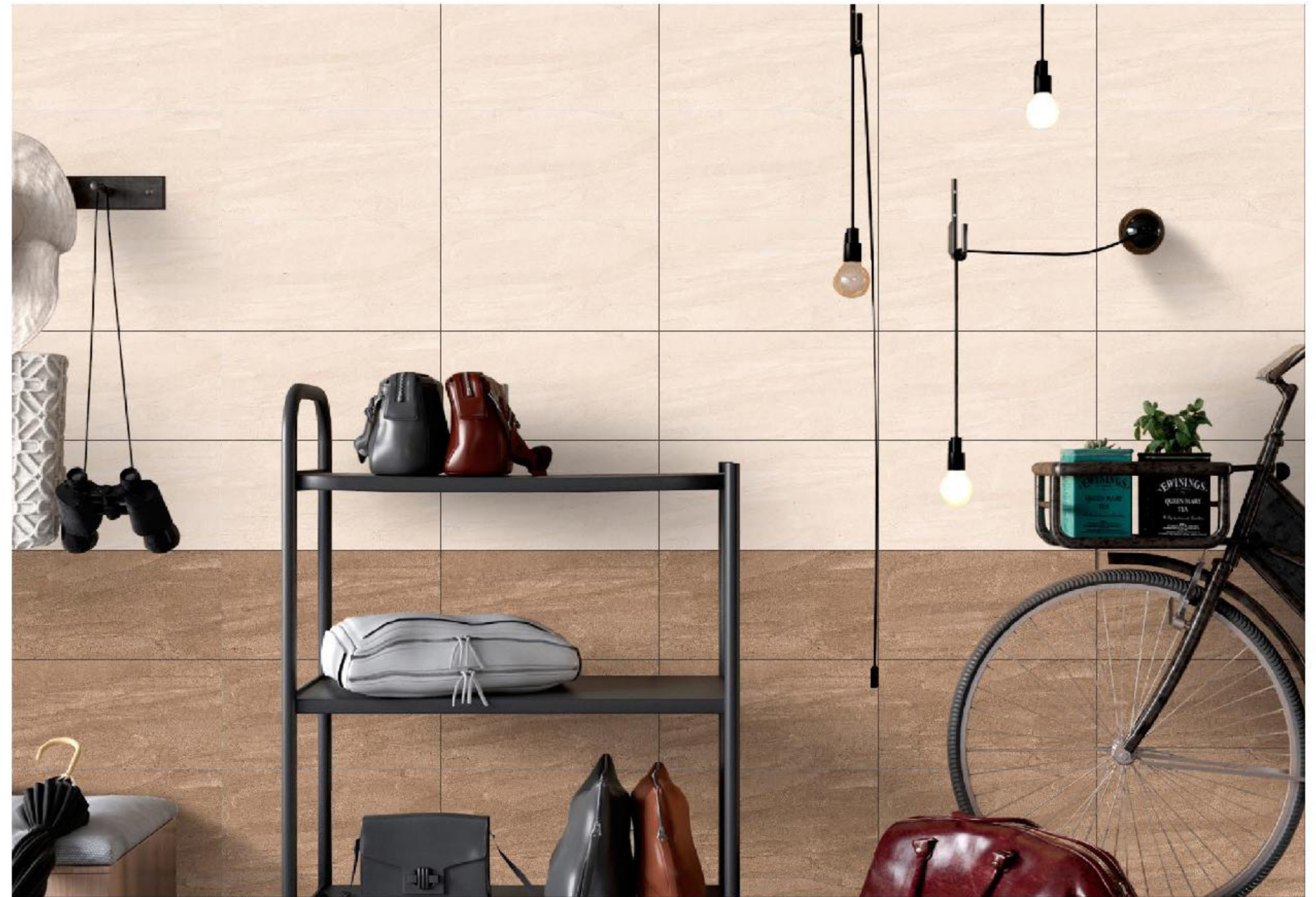
30x60cm



9048-LT



9048-DK



GVT (MATT)

30x60cm



9049-LT



9049-DK



GVT (MATT)

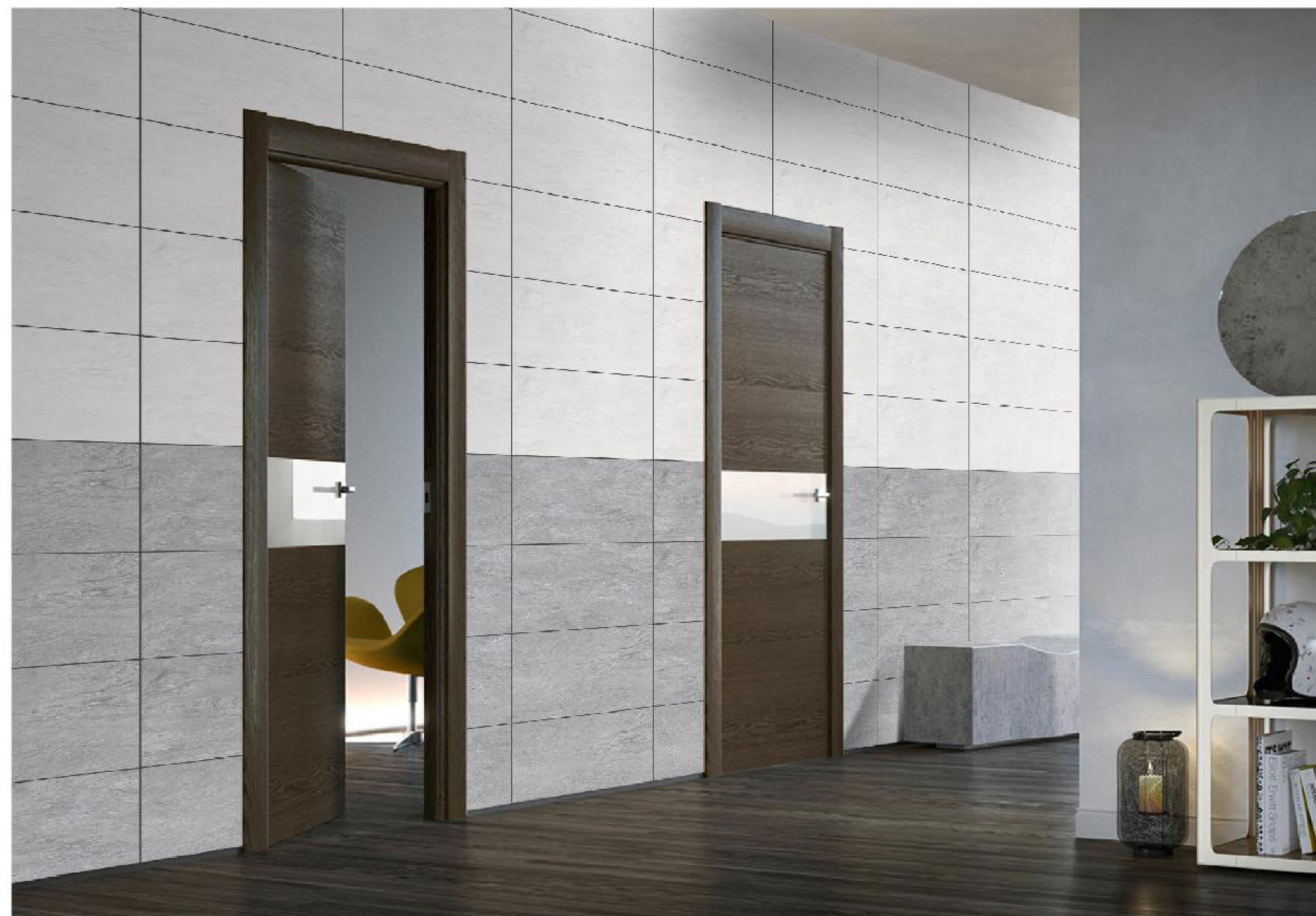
30x60cm



9050-LT



9050-DK



GVT (MATT)

30x60cm



9051-LT



9051-DK



GVT (MATT)

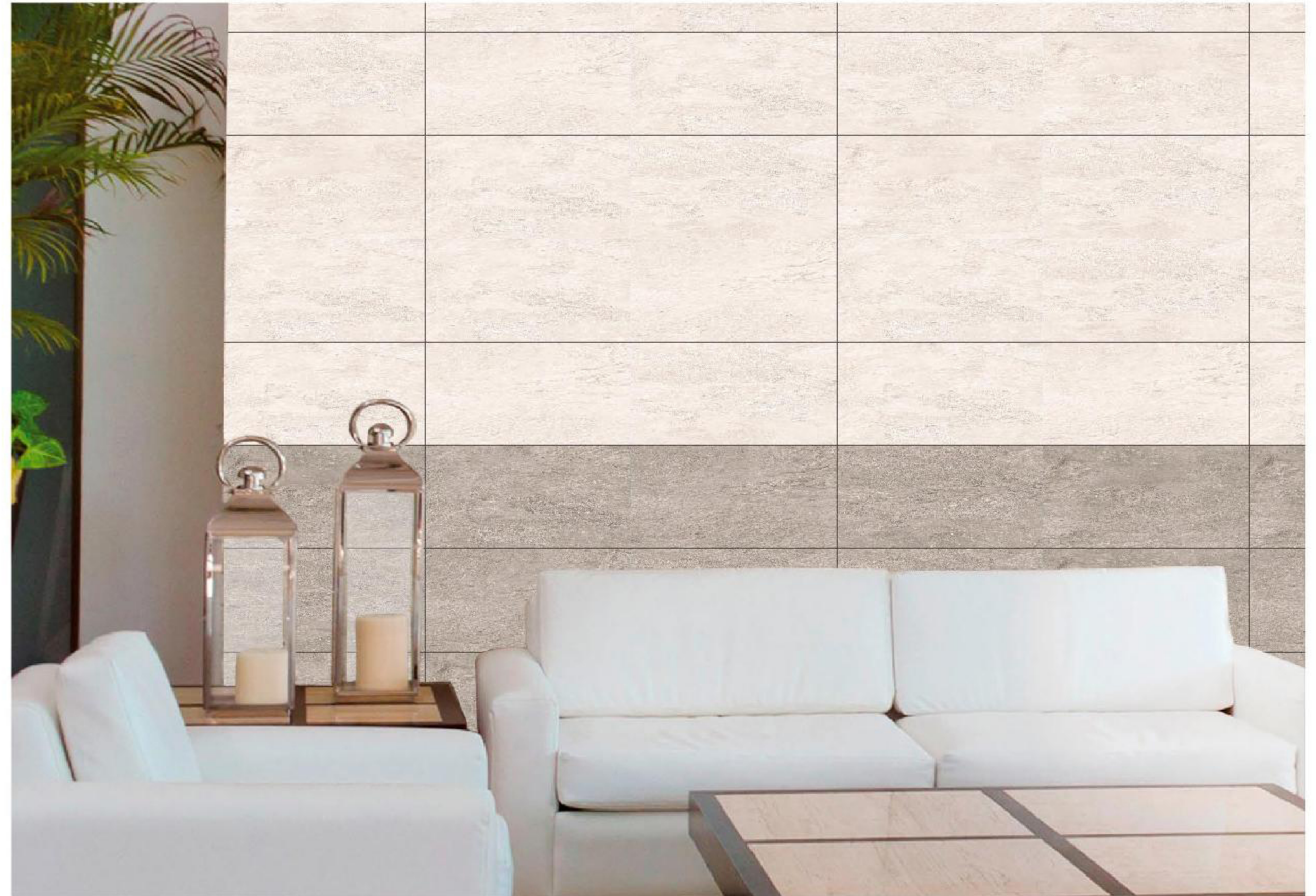
30x60cm



9052-LT



9052-DK



GVT (MATT)

30x60cm



9055-LT



9055-DK



GVT (MATT)

30x60cm



9056-LT



9056-DK



GVT (MATT)

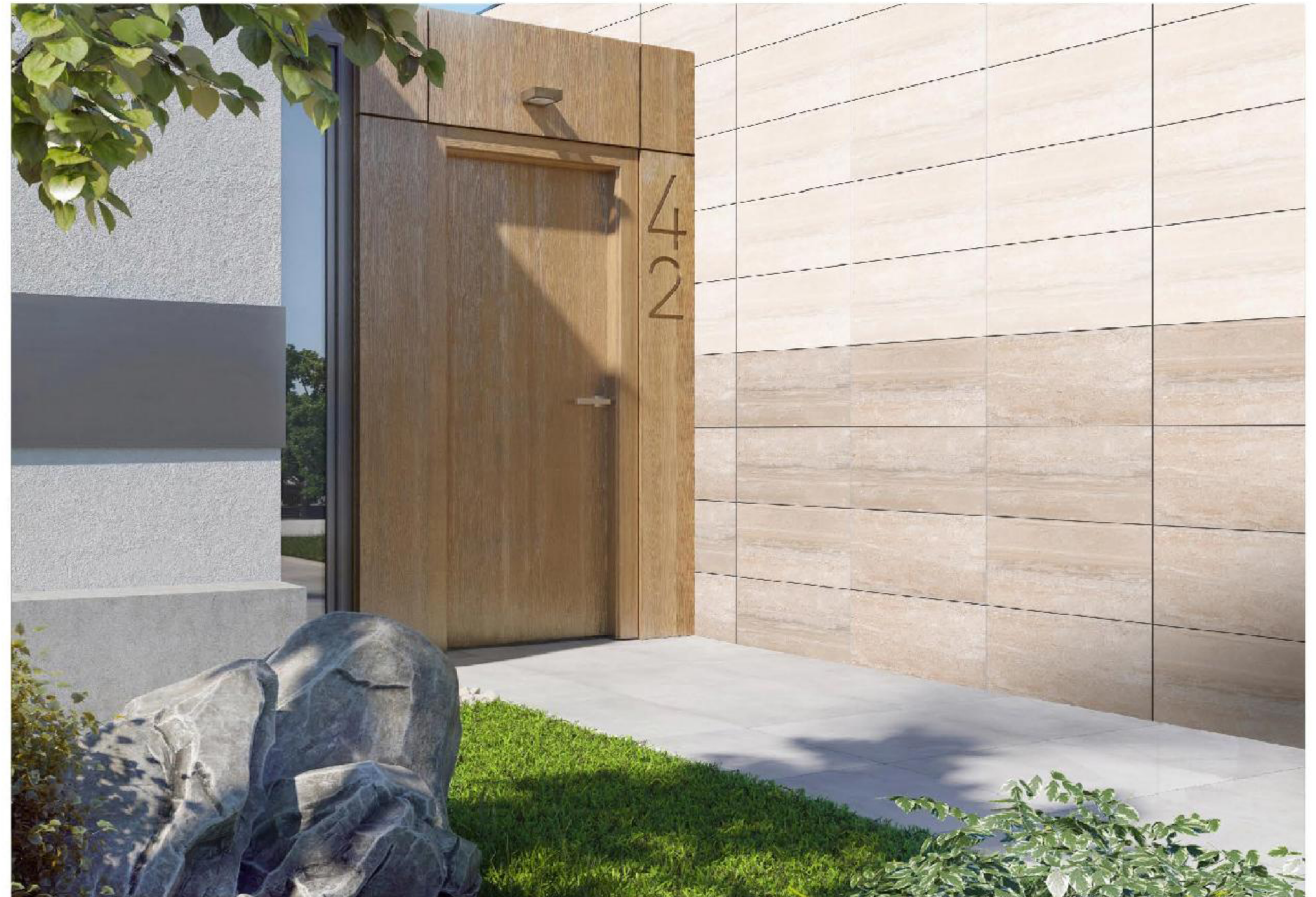
30x60cm



9060-LT



9060-DK



GVT (MATT)

30x60cm



9062-LT



9062-DK

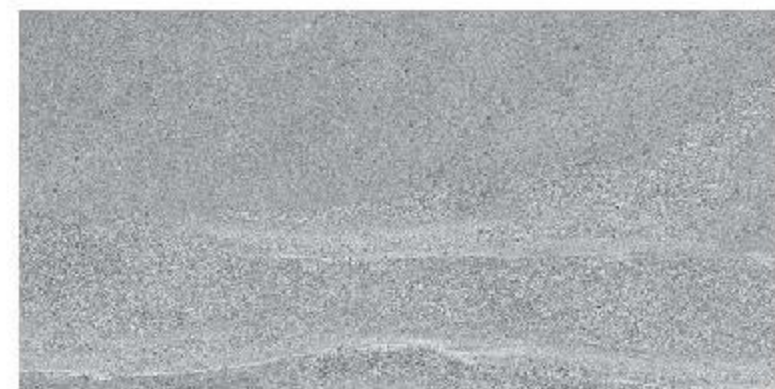


GVT (MATT)

30x60cm



9063-LT



9063-DK



GVT (MATT)

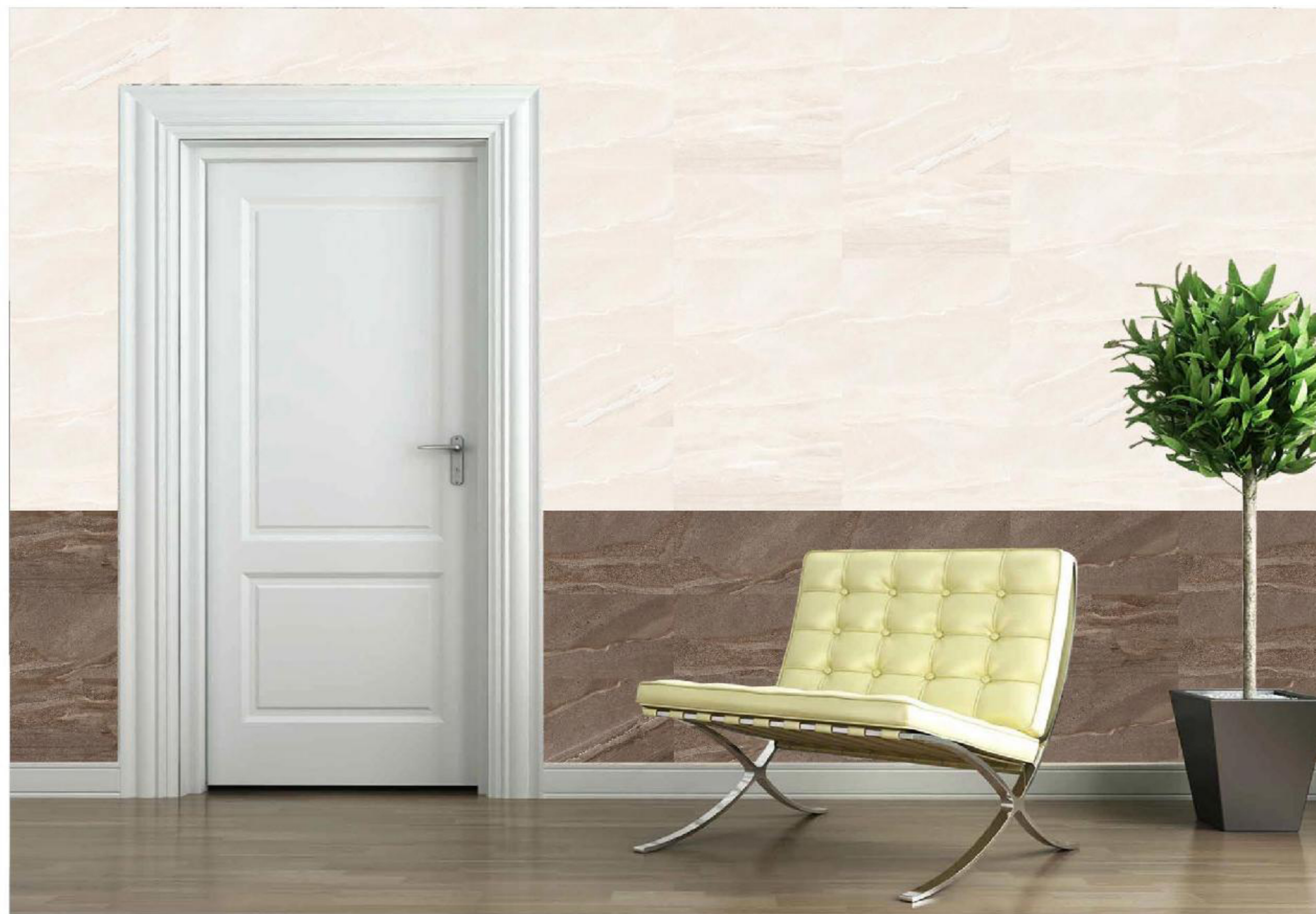
30x60cm



9064-LT



9064-DK



GVT (MATT)

30x60cm



9065-DK



9065-HL



GVT (MATT)

30x60cm



9070-LT



9070-DK



GVT (MATT)

30x60cm



9072-LT



9072-DK



GVT (MATT)

30x60cm



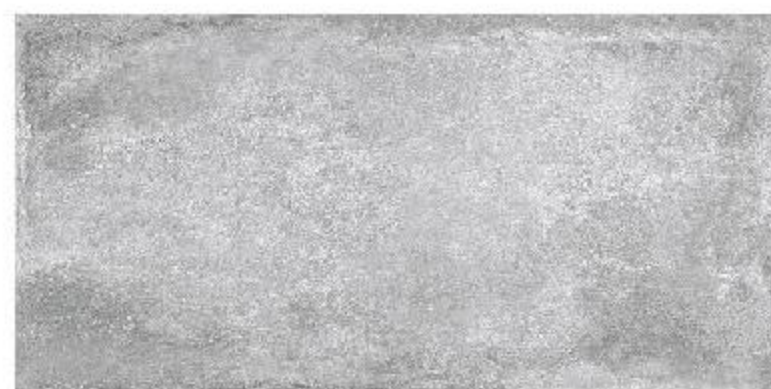
9079-LT



9079-HL-A



9079-HL-B



9079-DK



GVT (MATT)

30x60cm



9080-LT



9080-DK



GVT (MATT)

30x60cm



9081-LT



9081-HL-A



9081-HL-B



9081-DK



GVT (MATT)

30x60cm



9082-LT



9082-HL-A



9082-HL-B



9082-DK



GVT (MATT)

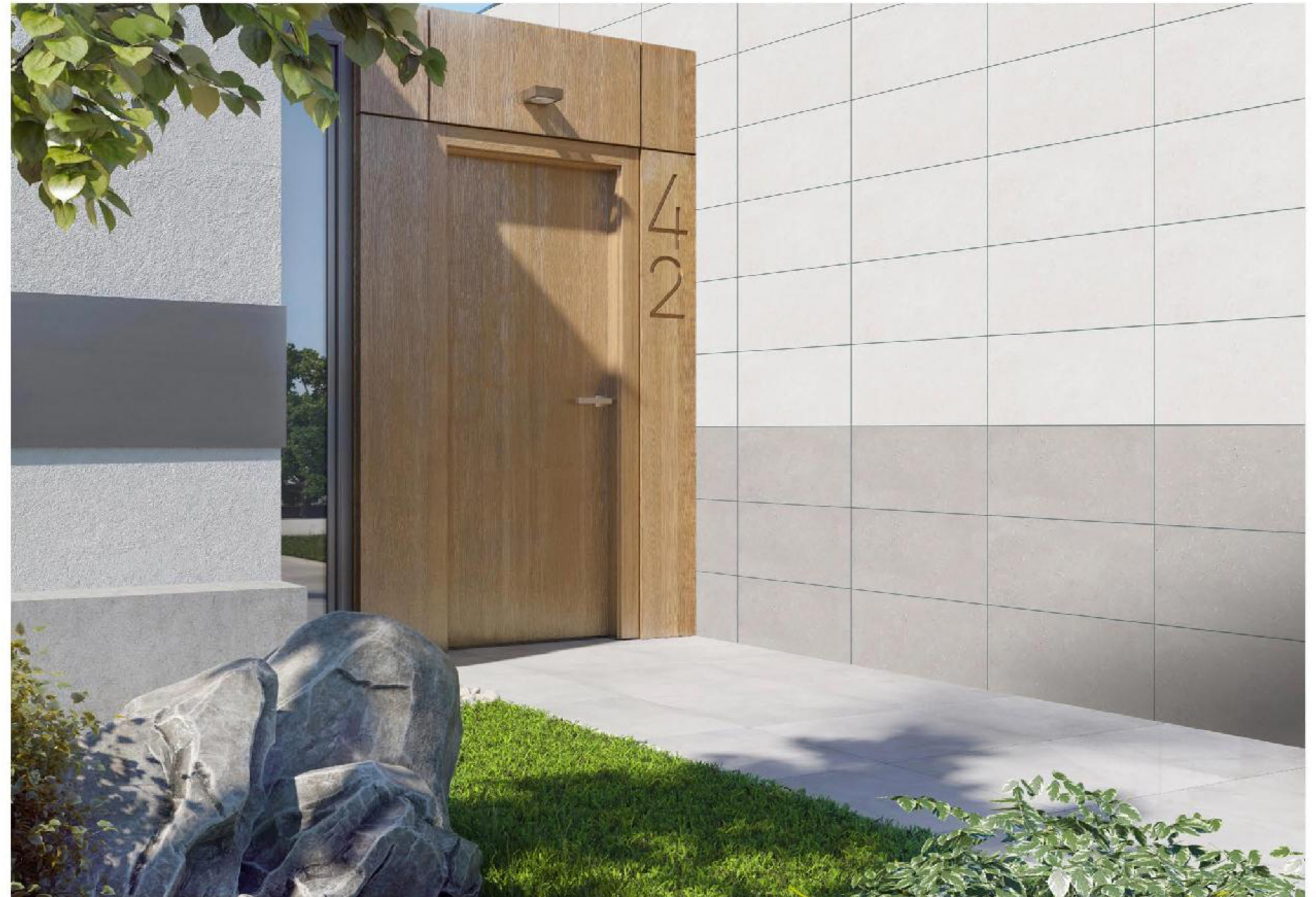
30x60cm



9085-LT



9086-DK



GVT (MATT)

30x60cm



9094-DK

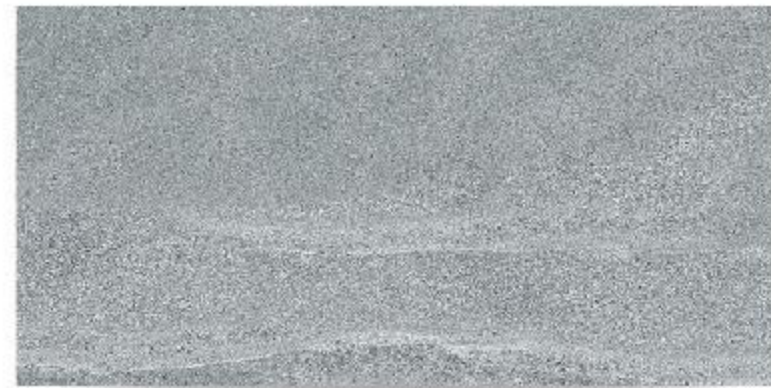


9094-HL



GVT (MATT)

30x60cm



9095-LT



9095-DK



GVT (MATT)

30x60cm



9106-LT



9106-DK



9107-LT



9107-DK



Phase-4

GVT (MATT)

30x60cm



9108-LT



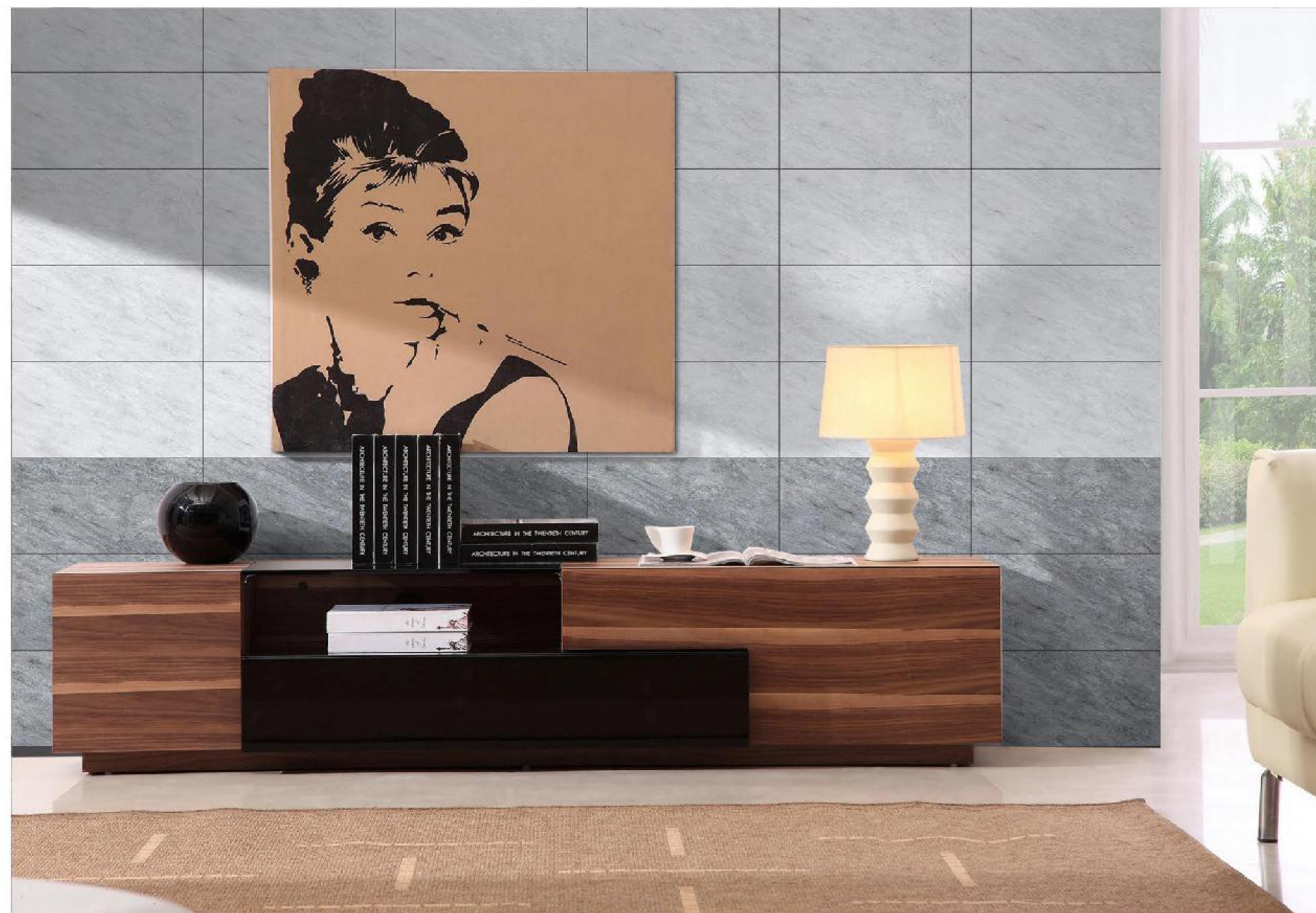
9108-DK



9109-LT



9109-DK



Phase-4

GVT (MATT)

30x60cm



9110-LT



9110-DK



Phase-4

GVT (MATT)

30x60cm



9113-LT



9113-DK



9114-LT



9114-DK



Phase-6

GVT (MATT)

30x60cm



9122-LT



9122-DK



9123-LT



9123-DK



Photo: E

GVT (MATT)

30x60cm



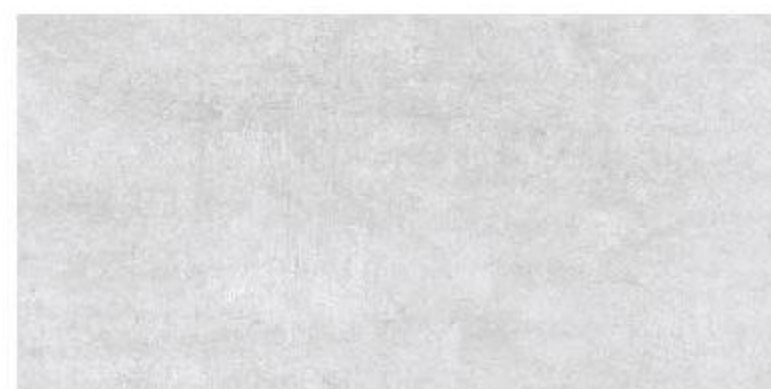
301-L



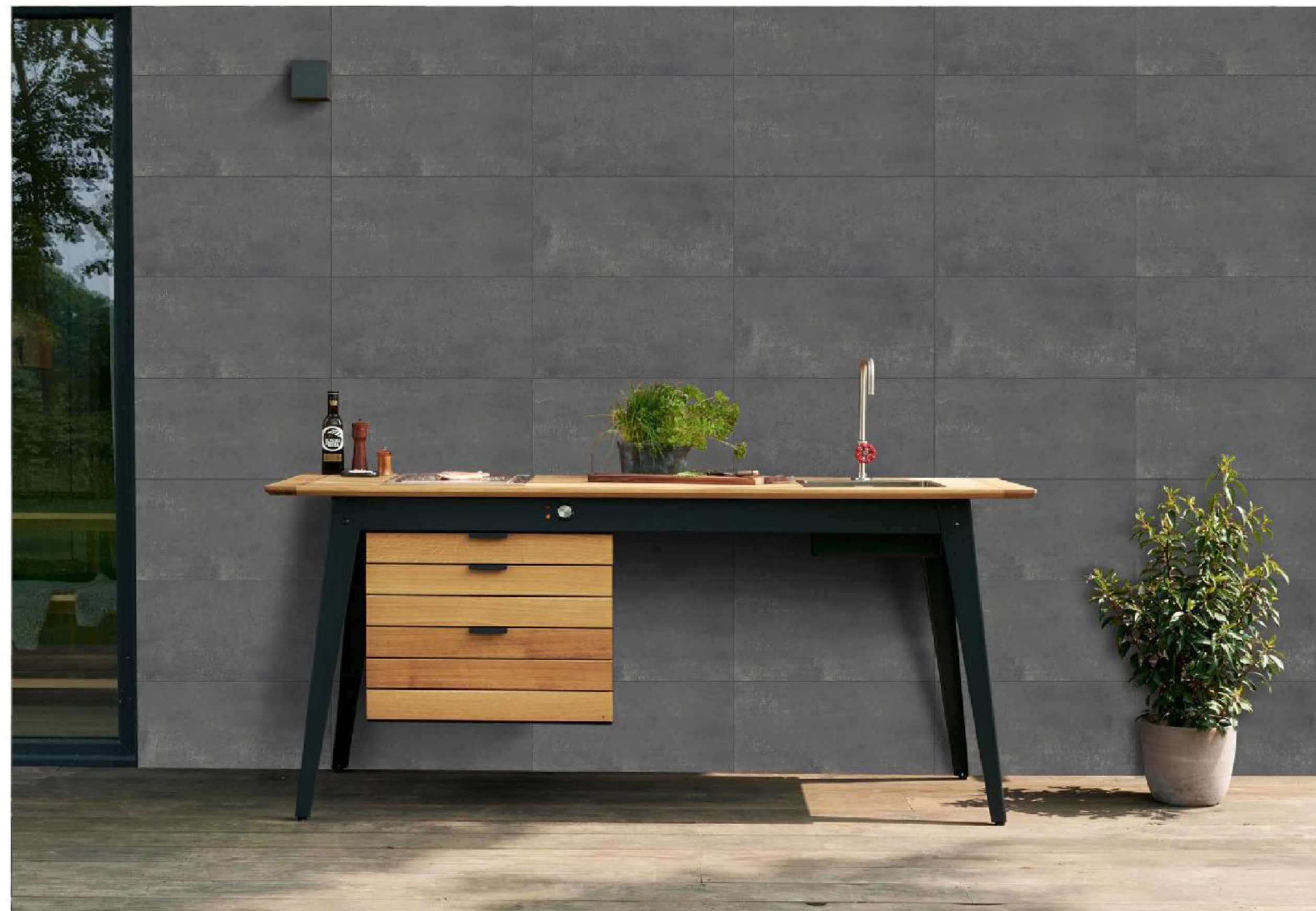
302-L



402-D



MARMO GRESS



GVT (MATT)

30x60cm



ALDO BLACK



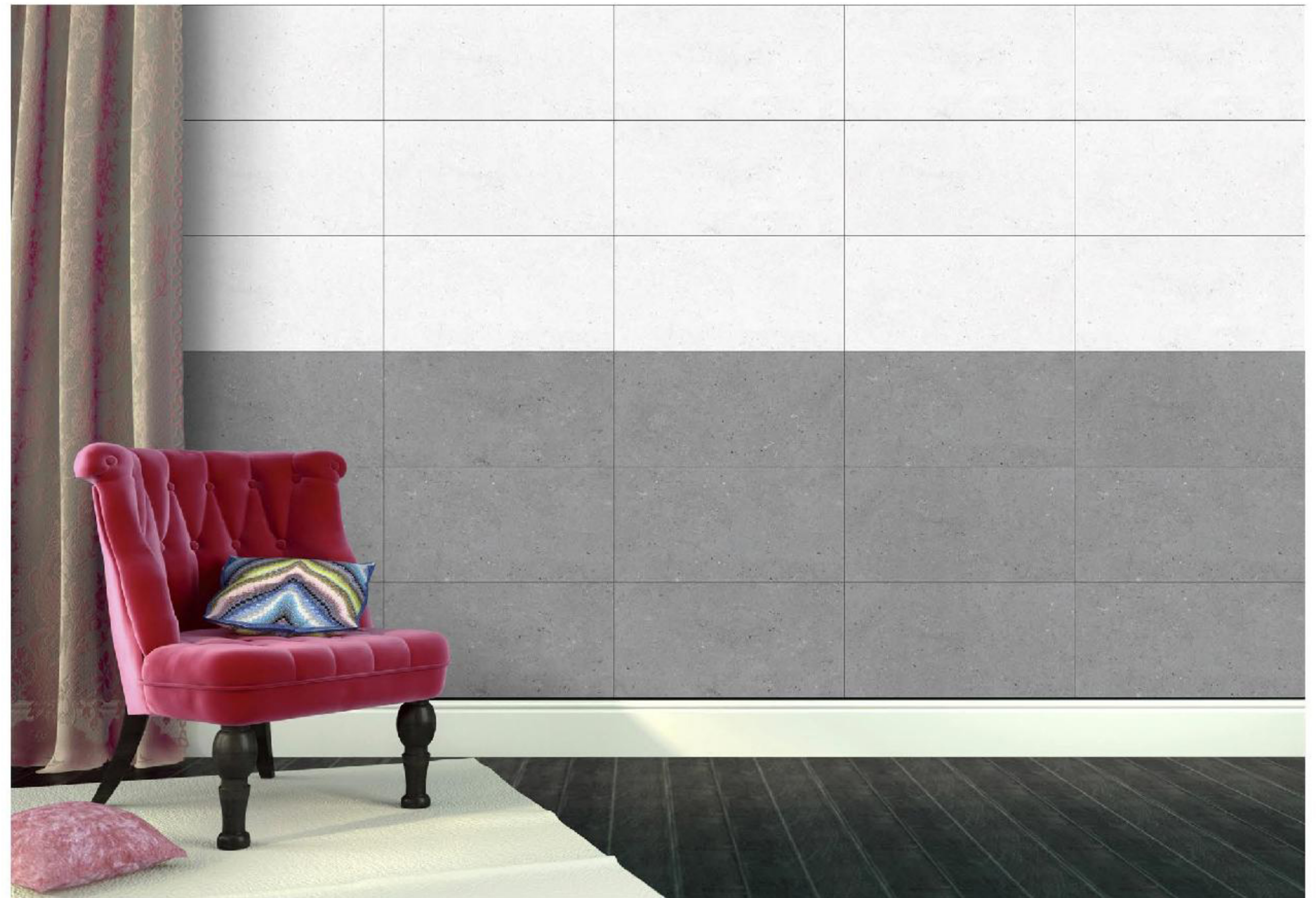
ALDO IVORY



CALIFORNIA BIANCO



CALIFORNIA GREY

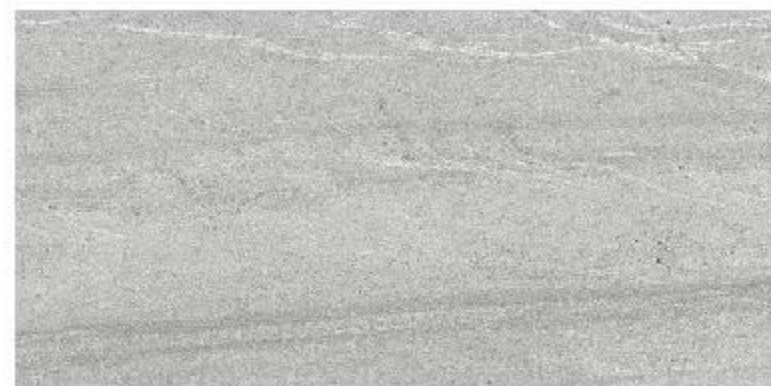


GVT (MATT)

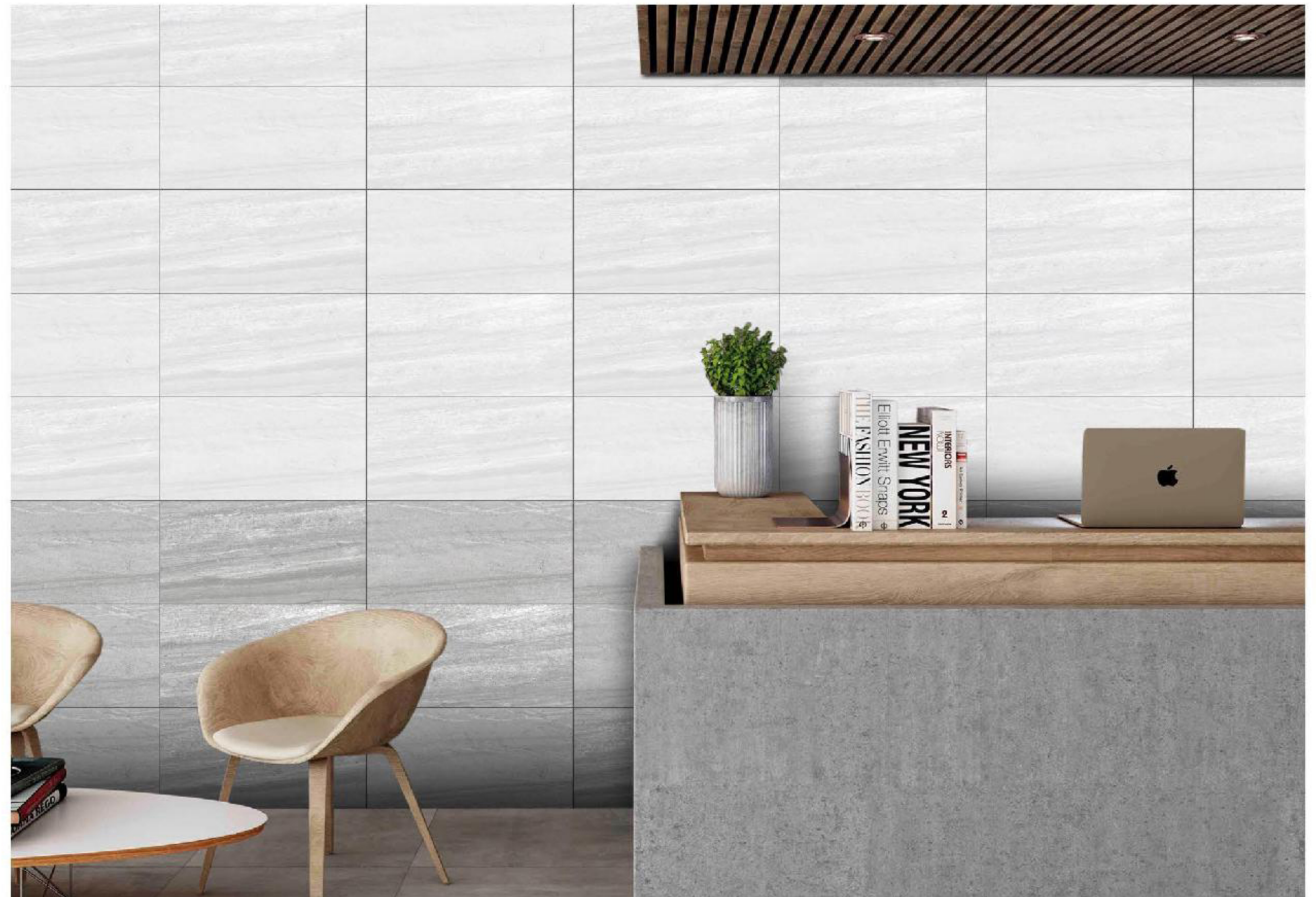
30x60cm



BAVARIAN LIGHT GERY



BAVARIAN DARK GERY



GVT (MATT)

30x60cm



CEMENTARE ROMAN



CEMENTARE MANATEE



GVT (MATT)

30x60cm



COSMO IVORY



COSMO BEIGE



GVT (MATT)

30x60cm



ENRICH BIANCO



ENRICH GRAFFITE



GVT (MATT)

30x60cm



ROAST CREMA



PEROLA CREMA



GVT (MATT)

30x60cm



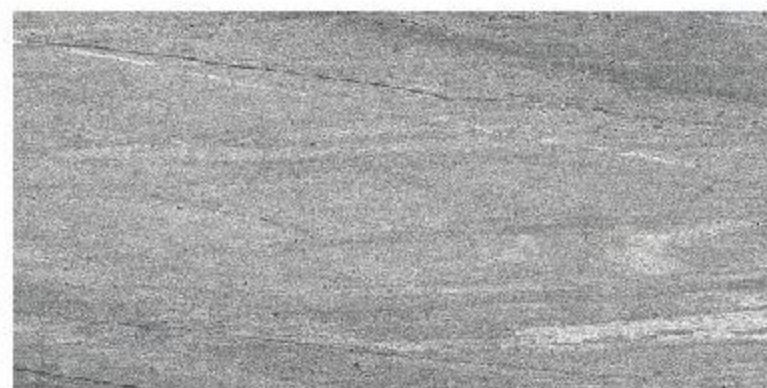
PM 7077



PM 7078



PM 7079



PM 7067



GVT (MATT)

30x60cm



PM 7073



PM 7074



PM 7075



PM 7076



GVT (MATT)

30x60cm



RENOIR GOLD



RENOIR BLACK



RENOIR GREY



RENOIR PEARL



GVT (MATT)

30x60cm



SAND STONE BROWN



SAND STONE WHITE



SAND STONE GRAY



GVT (MATT)

30x60cm



SPARK STONE WHITE



SPARK STONE GREY



GVT (MATT)

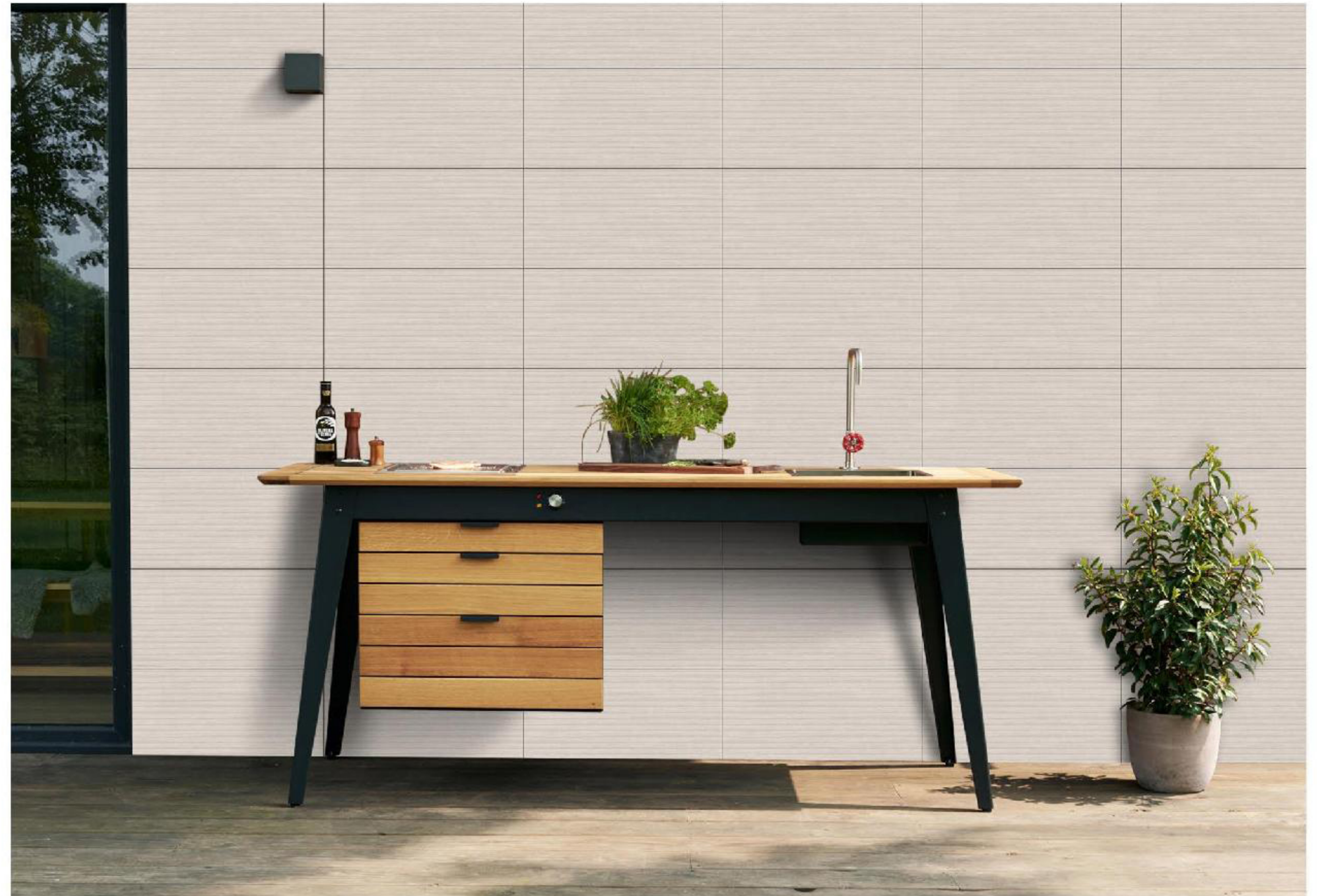
30x60cm



STRIP IVORY



STRIP GREY



Vitrified Wall Tiles

PACKING DETAILS

S.No.	Dimensions (mm)	No. of Tiles/ Box	Coverage Area
1.	300x600	06	1.08 sq. m.

TECHNICAL SPECIFICATIONS

S.No.	Property	Group B1a-ISO 13006 Annx. G.	Our Value	Test According to
1.	Deviation in length	± 0.6%	± 0.1%	ISO 10545-2
2.	Deviation in thickness	± 5%	± 4%	ISO 10545-2
3.	Straightness of sides	± 0.5%	± 0.1%	ISO 10545-2
4.	Rectangularity	± 0.6%	± 0.1%	ISO 10545-2
5.	Surface flatness	± 0.5%	± 0.15%	ISO 10545-2
6.	Surface quality (%)	A minimum of 95% of the tiles shall be free from visible defects that would impair the appearance of a major area of tile.	98% free from visible defects	ISO 10545-2
7.	Modulus of rupture	> 35 N/mm ³	40 N/mm ²	ISO 10545-4
8.	Breaking strength	> 1300 N	> 2000 N	ISO 10545-4
9.	Water absorption	< 0.5%	< 0.08%	ISO 10545-3
10.	Stain resistance	Stain proof	Stain proof	ISO 10545-14
11.	Chemical resistance	No damage	No damage	ISO 10545-13
12.	Thermal expansion	< 9 x 10 ⁶	< 6 x 10 ⁶	ISO 10545-8
13.	Moisture expansion	Nil	Nil	SO 10545-10
14.	Thermal shock resistance	No damage	No damage	ISO 10545-9
15.	Resistance to surface abrasion	Manufacturer to state abrasion class	PEI class 3-5	ISO 10545-7