



Interiors
that
effect
your style



OXTO INTERNATIONAL

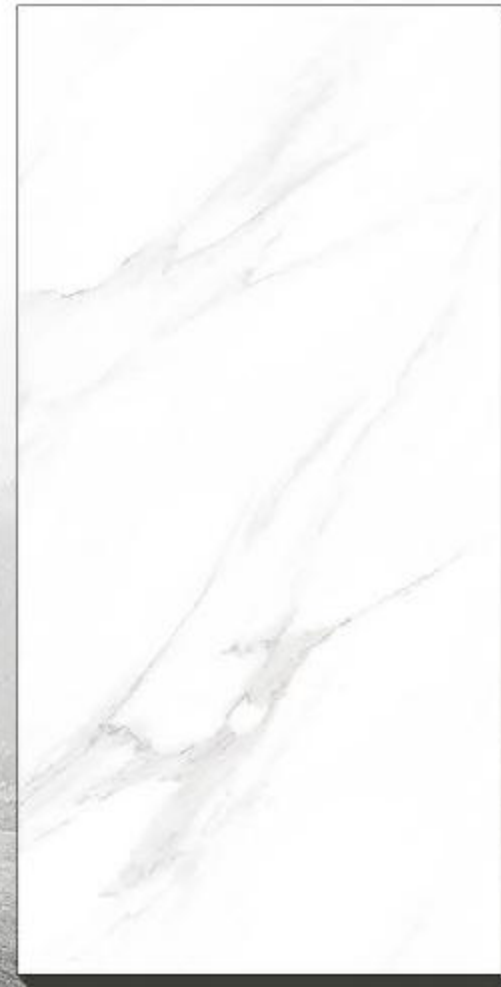
503 - Eden Ceramic City, 8-A National Highway,
Morbi-363642, Gujarat-INDIA

Call : +91 94089 61241 | +91 82381 21212

E-Mail : info@oxtrointernational.com

30X60cm

Vitrified Body
Wall Tiles



GVT Series

R9 Surface

R11 Surface

Sugar Surface

GVT (MATT)

30x60cm



9073



GVT (MATT)

30x60cm



9074



GVT (MATT)

30x60cm



9075

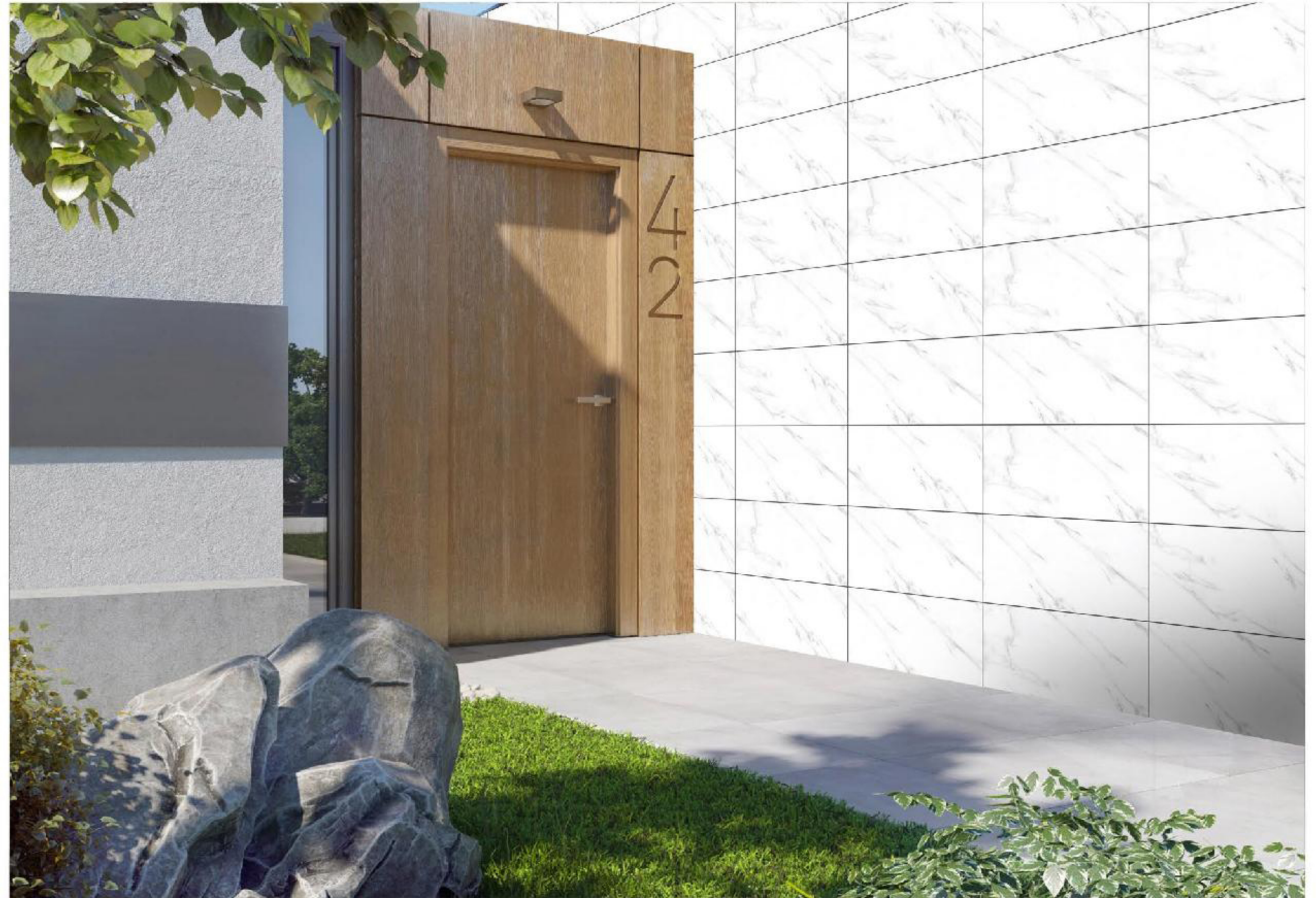


GVT (MATT)

30x60cm



9076



GVT (MATT)

30x60cm



9077



GVT (MATT)

30x60cm



9078



GVT (MATT)

30x60cm

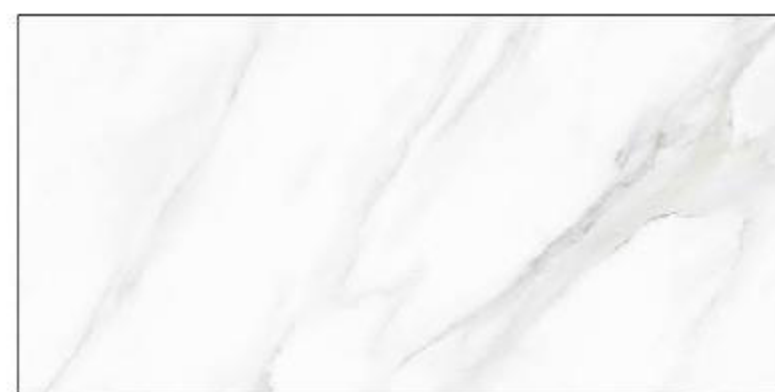


9098



GVT (MATT)

30x60cm



9100



GVT (MATT)

30x60cm



9102



GVT (MATT)

30x60cm



9103



GVT (MATT)

30x60cm

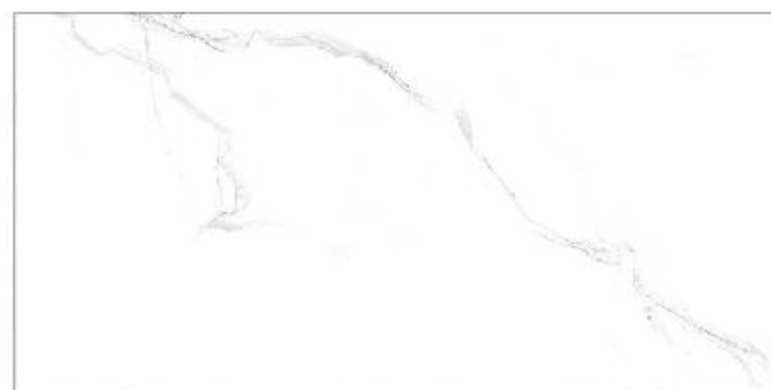


9104



GVT (MATT)

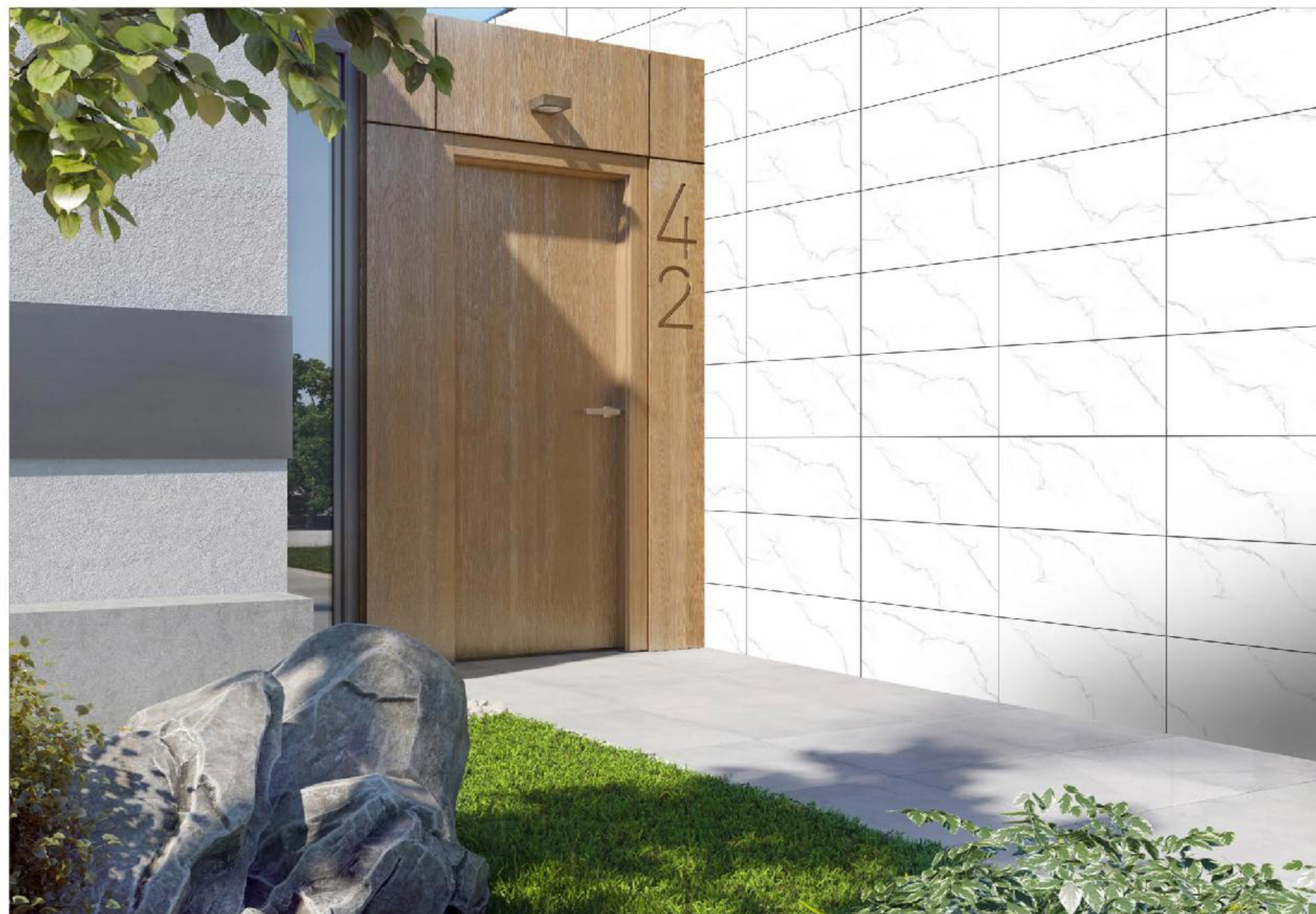
30x60cm



SISAM WHITE



SMOKE BIANCO



Vitrified Wall Tiles

PACKING DETAILS

S.No.	Dimensions (mm)	No. of Tiles/ Box	Coverage Area
1.	300x600	06	1.08 sq. m.

TECHNICAL SPECIFICATIONS

S.No.	Property	Group B1a-ISO 13006 Annx. G.	Our Value	Test According to
1.	Deviation in length	± 0.6%	± 0.1%	ISO 10545-2
2.	Deviation in thickness	± 5%	± 4%	ISO 10545-2
3.	Straightness of sides	± 0.5%	± 0.1%	ISO 10545-2
4.	Rectangularity	± 0.6%	± 0.1%	ISO 10545-2
5.	Surface flatness	± 0.5%	± 0.15%	ISO 10545-2
6.	Surface quality (%)	A minimum of 95% of the tiles shall be free from visible defects that would impair the appearance of a major area of tile.	98% free from visible defects	ISO 10545-2
7.	Modulus of rupture	> 35 N/mm ³	40 N/mm ²	ISO 10545-4
8.	Breaking strength	> 1300 N	> 2000 N	ISO 10545-4
9.	Water absorption	< 0.5%	< 0.08%	ISO 10545-3
10.	Stain resistance	Stain proof	Stain proof	ISO 10545-14
11.	Chemical resistance	No damage	No damage	ISO 10545-13
12.	Thermal expansion	< 9 x 10 ⁶	< 6 x 10 ⁶	ISO 10545-8
13.	Moisture expansion	Nil	Nil	SO 10545-10
14.	Thermal shock resistance	No damage	No damage	ISO 10545-9
15.	Resistance to surface abrasion	Manufacturer to state abrasion class	PEI class 3-5	ISO 10545-7